

St Ives Bay

HOLIDAY PARK

NO PRICE INCREASES*
NO CARD CHARGES

Right on the beach!



- CHALETS
- CARAVANS
- CAMPING

book online www.stivesbay.co.uk or call 0800 317713

*except calendar changes

Welcome to the best beach!



*"Cornwall is beautiful and the locals are warm,
I would highly recommend St Ives Bay Holiday"*



Holiday Checklist

Beach

RNLI lifeguard

Pool

Two on park pubs

Food

Free Wifi

Free entertainment

Reasonably priced shop

Laundrette

Always check dates facilities open!

No smoking in units or buildings please!

No dogs (except guide dogs by arrangement)

friendly and very welcoming.
y Park". Feedback from our website.

Awesome setting

The holiday park is set in sand dunes running down to its own golden sandy beach*. Many units have stunning sea views.

Best choice of accommodation

We offer caravans, chalets, static tents, camping and houses. 18 different unit types. Something to suit everyone's taste and budget.

All in value

There are no hidden costs. The on-site shop, bistro, bars and food outlets are reasonably priced. Entry to bar and pool facilities is included.

Families first

We work best for families and couples. We don't offer bookings to same-sex or similar parties.

Special Offers

TWO PERSON** for two people only.

FOUR PERSONS** in total. Maximum of 2 adults or a maximum of three children under 10 where there is only one adult.

**Babies (maximum of 2) of 18 months or under do not count as a person. Availability limited. Offers do not apply in conjunction with any other offer. See pg 14 for prices.

*Access to the beach from the Park is not suitable for buggies and wheelchairs. We can let you know about other beaches in the area.

Our Caravans

Most of our caravans are set in natural undulating duneland which overlooks the sea. Some are in sheltered groups about 750 yards from the beach. Many have superb sea views.

Caravans are graded 🟡🟡 (our lowest) to 🟡🟡🟡🟡 (our highest grade) giving you an indication of age and status. All our caravans are well maintained and older units have had much refurbishment. There are many more pictures of all our units on our website.

The Osprey, Horizon, Raven, Sirocco and Mirage caravans have decks which are optional at a cost of £60 per week.

For a more detailed specification - please ask!

EVERY CARAVAN HAS:

- Shower room with toilet
- Gas water heater, cooker and fridge
- Blankets and pillows or linen and duvets where indicated
- Free colour TV
- Free electricity, gas, mains water and disposal
- Gas lounge fire

PLEASE NOTE: Towels are not provided in any of our units.



"This will be our third visit, the park is great, the beach is amazing and the caravans are gorgeous and comfy, ideal home from home!!" Feedback from our website.

Caravan Details

Please visit www.stivesbay.co.uk for full details and photos of our caravans and the park.

Name	Rating	Sleeps	Size	Sea View	Deck Optional	Free Linen	Duvets	Microwave	Description
 OSPREY Fabulous super wide timber units.	★★★★★	up to 8 - 3 Bedrooms 1x Double 4'6", 2 x 2 Single 2'3", 1x Bed Settee.	36ft x 13ft	✓	✓	✓	✓	✓	Super-wide (13ft) units. New in 2010/11. Mostly beach end and all have sea views. Quality timber (lodge style) construction and double glazing makes these units warmer and quieter. 8ft vaulted timber ceilings add to feeling of space. Fridge freezer. Heaters in all bedrooms.
 HORIZON Older units with 3 bedrooms.	★★★★ <i>Special Offer see pg14</i>	up to 8 - 3 Bedrooms 1x Double 4'6", 1 x 2 Single 2'3", 1 x 2 Single 2', 1x Bed Settee.	36ft x 12ft	✓	✓	✓	✓	✓	An older unit (2003) that has been reupholstered/ recarpeted since purchase. 12ft wide with high ceilings. Beach end with sea views. Very popular due to lower price and 3 bedrooms. Book early! Fridge freezer. Heaters in all bedrooms.
 RAVEN BRAND NEW timber units. En-suite & 5ft bed!	★★★★★	up to 6 - 2 Bedrooms 1 x Double 5', 1 x 2 Single 2'6", 1 x Bed Settee.	33ft x 12ft	✓	✓	✓	✓	✓	Brand new for 2012. Beach end with sea views. 12ft wide. Quality timber (lodge style) construction/double glazing makes these units warmer and quieter. Main bedroom has 5ft bed and en-suite. Timber vaulted ceilings add to feeling of space. Fridge freezer. Heaters in all bedrooms.
 SIROCCO Most popular unit.	★★★★★ <i>Special Offer see pg14</i>	up to 6 - 2 Bedrooms 1 x Double 4'6", 1x 2 Single 2'3", 1 x Bed Settee.	28ft x 12ft	✓	✓	✓	✓	✓	Our most popular unit. Unit is 12ft wide, with high ceilings, and mostly at the beach end of the park. All have sea views. Now five years old these units have a big following! This caravan is double glazed and has heaters in the bedrooms.
 MIRAGE Most economical with sea view.	★★★★★ <i>Special Offer see pg14</i>	up to 6 - 2 Bedrooms 1 x Double 4'3", 1 x 2 Single 2'3", 1 x Bed Settee.	28ft x 10ft	✓	✓	✓	✓	✓	Smallest and best value sea view unit mostly at the beach end. These have 7ft ceilings, double glazing and heaters in the bedrooms. Snug and priced competitively these caravans were new in 2008.
 NEPTUNE Good units in the middle of the park.	★★★★ <i>Special Offer see pg14</i>	up to 6 - 2 Bedrooms 1 x Double 4'3", 1 x 2 Single 2'3", 1 x Bed Settee.	28ft x 10ft	-	-	✓	✓	-	New in 2004 this unit has a pitched roof, 7ft ceilings, bay windows and heaters in the bedrooms. These caravans are in the middle of the park an area that looks out over the bay. These do not have sea views from inside the unit.
 MERLIN Good units in a sheltered position.	★★★★ <i>Special Offer see pg14</i>	up to 6 - 2 Bedrooms 1 x Double 4'3", 1 x 2 Single 2'3", 1 x Bed Settee.	28ft x 10ft	-	-	-	-	-	New in 2004 this unit has a pitched roof, 7ft ceilings, bay windows and heaters in the bedrooms. These caravans are in the middle of the park. These units do not have sea views but are located in a sheltered area.
 MERMAID Economical 4 person unit.	★★★ <i>Smaller Unit</i>	up to 4 - 2 Bedrooms 1 x Double 4', 2 x Single 2'.	26ft x 10ft	-	-	-	-	-	Small caravans in a sheltered area in the middle of the park. An older unit that has had much refurbishment including reupholstery, recarpeting, curtains etc and is good value for money. Please see pictures on our web site.
 EASY ACCESS Priced as Merlin 	★★★★	up to 5 - 2 Bedrooms 1 x Double 4'6", 1 x Single 2'3", 1 x Bed Settee.	34ft x 10ft	-	✓	✓	✓	✓	Designed for those needing wheelchair access. Please contact us or see our website for photos and information to be sure this unit is appropriate to your needs.
 SUNDEW Wed-Wed Unit.	★★★ <i>Smaller Unit</i>	up to 6 - 2 Bedrooms 1 x Double 4', 1x 2 Single 2', 1 x Bed Settee.	26ft x 10ft	-	-	✓	✓	-	New in 2003 situated in the middle of the park these are small units without sea views. Recent reupholstery. Wednesday booking on these caravans helps to beat the traffic. Great value!

"Absolutely brilliant. Beautiful park in a beautiful part of the world with so many places to see." Feedback from our website.

Our Chalets

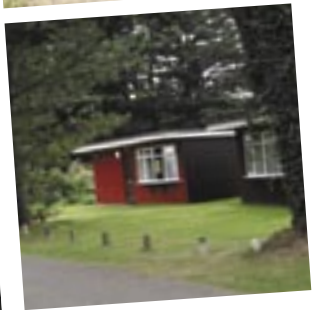
Our chalets are grouped in grassy areas at the entrance to the park, all less than 1000 yards from the beach. We have our own free car park by the beach. All chalets are carpeted. Duvets and linen are provided in all A & B grade chalets. Chalets do not have sea views (except some A5*). There are many more pictures of all our units on our web site.

More detail is given in each description. Single and bunk beds are 2ft 6' wide, doubles are 4ft 6' except where indicated. Cots do not fit in bedrooms.

EVERY CHALET HAS:


- Free colour TV
- Free electricity
- Full size cookers
- Fridge
- Convector heaters
- Bathroom with toilet
- Duvets and linen (except C4 units which have blankets only)

PLEASE NOTE: Towels are not provided in any of our units.



Chalet Details

Please visit www.stivesbay.co.uk for full details and photos of our chalets and the park.

				Free Linen	Duvets	Microwave	
	Name	Rating	Sleeps				Description
	A6 CHALET New bathrooms windows and beds in 2009/10.	★★★★	up to 6 - 3 Bedrooms 1 x Double, 2 x 2 Single.	✓	✓	✓	Brick built bungalow style chalets with three decent size bedrooms. Patio doors make the units light and airy. Recent new bathrooms have shower only (no bath). Also recent beds, and double glazing have made these chalets more popular.
	A5* CHALET Recent bathrooms (2010), leather suites (2011), decoration (2011/12).	★★★★	up to 5 - 2 Bedrooms 1 x Double, 1 x Single + 1 x Bunk Beds.	✓	✓	✓	A small group of chalets high up in the middle of the park in an area that overlooks the bay. Spacious units recently redecorated and with new suites. Recent bathrooms also with shower only. These units are timber clad and quite spacious. Very popular.
	A5 CHALET Spacious unit with pitched roof.	★★★★ <i>Special Offer see pg 4</i>	up to 5 - 2 Bedrooms 1 x Double, 1 x Single + 1 x Bunk Beds.	✓	✓	✓	A spacious unit with a bunk bed in the second bedroom. Timber clad units with a pitched roof. These units have a small bath and shower over. A comfortable unit that has had much refurbishment over the years. Exterior refurbishment for the season of 2012.
	A4* CHALET Rebuilt 2009/10/11.	★★★★	up to 4 - 2 Bedrooms 1 x Double, 1 x 2 Single.	✓	✓	✓	Totally refurbished for the seasons of 2009/10/11 and featured in the main photograph opposite. All new furniture, bathrooms, kitchens, fittings during refurbishment. Bathrooms are shower only, no bath. Very popular!
	A4 CHALET Good chalets. Flat roof and bay window.	★★★★ <i>Special Offer see pg 4</i>	up to 4 - 2 Bedrooms 1 x Double, 1 x 2 Single.	✓	✓	✓	A good standard of chalet with bay window. Completely rebuilt some years ago and has had refurbishment since including carpets, curtains, and upholstery. This unit has a small bath and shower over.
	A2 CHALET Most popular chalet for 2.	★★★★	up to 2 - 1 Bedroom 1 x Double.	✓	✓	✓	One of our most popular and very economical chalet for two people only. Originally two bedrooms and now knocked into one. New bathrooms were fitted in 2007 (shower only) and recent beds and carpets in 2008.
	C4 CHALET Most economical.	★★★	up to 4 - 2 Bedrooms 1 x Double (4ft), 1 x 2 Single.	-	-	-	Our most economical unit for 4 people. Supplied with blankets and pillows only – no linen or duvets. Timber clad chalets with flat roofs. Fitted kitchens recent lounge carpets and upholstery (2004). See pictures of interior and exterior on our website!
	B4 OR B5 CHALET (Wed to Wed only) New bathrooms 2010.	★★★★	up to 4 or 5 - 2 Bedrooms Either 1 x Double and 1 x 2 Single OR 1 x Double, 1 x Single + 1 x Bunk Beds. Please specify sleeping arrangements when booking.	✓	✓	-	Spacious and good value these chalets are booked Wednesday to Wednesday. Recent bathrooms (2010) are shower only with no bath. All have two bedrooms. The second bedroom in the B5 has a bunk bed and a single bed.

Camping

BOOKINGS

To guarantee a place we strongly recommend that you book early. Bookings are taken on a Saturday to Saturday basis during the school holidays. Some hookups are available Sunday to Sunday.

STATIC TENTS

Our static tents were new in 2010/2011 and are 3 bedroom units taking a maximum of 6 people. Bedrooms are: 1 double + 1 single / 1 x 2 single / 1 single. We provide tent, electricity, lights, TV, gas cooker, fridge, microwave, toaster, kettle, plates and utensils. **You need to bring bed linen, towels etc.** Toilets, showers and washing up facilities are available in the toilet blocks.

PITCH-ONLY PRICES

Prices are per pitch for 2 adults and 2 children (or 4 adults where there are no children), and one car. Extra charges apply when there are more than 4 people, see pg 14 for prices. **Maximum of 6 people per pitch and a maximum of 2 cars.**

There are no reductions for small units which occupy part pitches. If accommodation, equipment, gazebos, and one vehicle will not fit on one pitch (27ft x 27ft approx.) you will need to book two. Extra pitches are not available on arrival in peak weeks. We do not allow generators on site.

PLEASE NOTE: Standard & electric pitches are not in the same area. We cannot guarantee pitches together for group bookings.

Pitch types are: Unserviced / Hookup / fully serviced / Sun-Sun hookup / Static tent.

"Lovely pitches, great facilities, and the most beautiful beach which is perfect for surfing. I would recommend this site to anyone." Feedback from our website.

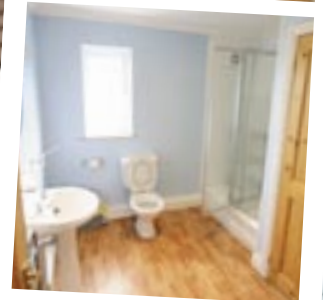
Holiday Houses

There are three houses on the Park. WOLF and LONGSHIPS are right at the front of the Park close to the pool and the Sands Bar. These properties are in a stunning position, only a stones throw from the beach with uninterrupted views from St Ives to Godrevy Lighthouse. Semi-detached, they have living rooms upstairs with full length balconies looking out to sea.

PENDEEN has similar accommodation space to the other two houses, but it is all on one level. This may suit a party with someone who is less able or disabled. Ring or see our website for details. The houses have their own patio area. All three houses accommodate ten people in four bedrooms with two bathrooms (one with shower but no bath). The sleeping arrangements are one double, one

twin and two rooms with twin bunk and one single. Offering a standard above anything else on the Park, these units would probably suit two families.

Houses are all spacious with fitted kitchens including fridge freezer, washing machine, dishwasher, double oven (electric fan), large electric hob and microwave.



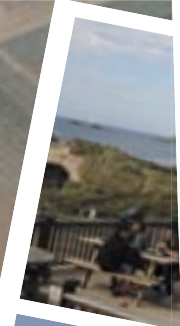
"Brilliant time, lovely views and very handy for the beach and club house. There were nine of us and there was loads of room". **Feedback from our website.**

By Day...

INDOOR HEATED POOL

Open from 9am-6pm. Entry is free and limited to those staying on the park. The main pool measures 60ft x 30ft and is 7ft at the deep-end. The children's pool is 20ft x 30ft and 2ft 9in deep. For out of season holidays, the pool is open 9am-1pm every day except Saturday. Children under 12 and non-swimmers must be accompanied by an adult. Pool staff cannot look after individuals.

THE CONSERVATORY adjoins the pool and incorporates the Bay Bistro (eat in or takeaway food) and forms a family area for the Sands Bar at night. Free WiFi Hotspot.



"The pool is clean and spacious and the beach is gorgeous. We all had a fantastic holiday and the staff were great." Feedback from our website.

By Night...

DYNAMITE BAR

The Dynamite Bar offers 7 nights entertainment* for all adults and for children in separate areas. Typically, the children will have Punch & Judy, a magician, fancy dress and discos. Then in the family area (for everyone) a variety of discos, bands and family fun and games are run. Bingo starts at 7.30pm, 6 nights a week.

THE SANDS COMPLEX

The sands bar and conservatory (including the Bay Bistro) form a large area with a relaxed atmosphere at night. The bar area is reserved for adults. The bistro serves food until 9pm*. See our website for a sample menu.

- Free entertainment* for all ages.
- A choice of 2 full size pubs on the Park, both with huge family areas.
- All entertainment* subject to change without notice!

* NB Check all dates on page 12. Entertainment and food services may be limited at the beginning and end of season.

Persons under 18 years of age are not allowed to drink in our bars under any circumstances. If in doubt we will not serve you unless proof of age is provided.

PLEASE READ CONDITION 14 ON PAGE 13 CAREFULLY.

"We have stayed in many parks around the area and we found that this one, was by far the best." Feedback from our website.



General Information

Booking Your Holiday

Bookings can be made online at www.stivesbay.co.uk. You can make a provisional booking by calling our booking hotline 0800 317713. Provisional bookings are held for 7 days and may be confirmed by telephone or by completing the booking form on page 15 of this brochure.

Payment

On confirmation of your booking, we will take a deposit by cheque, credit or debit card. The balance of payments due must be made 8 weeks prior to your holiday start date. No reminders will be sent for outstanding balances which may result in bookings being cancelled.

Your Holiday Dates

The majority of our accommodation is booked on a Saturday to Saturday basis. We do however have a limited number of caravans & chalets available from Wednesday to Wednesday and a small number of camping pitches available Sunday to Sunday.

Getting to the Holiday Park

The Holiday Park is located in Hayle approximately ½ mile from the A30 providing good access from all parts of the UK. Your accommodation is normally available after 4pm on the first day of your holiday.

Linen

Bed linen and duvets are provided in our houses and most chalets and caravans. Blankets and pillows only are provided in all other accommodation – please check your individual accommodation information for details. Linen may be hired on site for a small charge. Please note, we do not provide towels or hire duvets.

Cots

A cot rail which converts ONE single bed into a cot is provided free of charge in the Mermaid, Merlin, Neptune and Sundew. In the Osprey, Raven, Sirocco and Mirage one of the single beds folds away to allow space for a travel cot which can be hired at time of booking.

Cot linen is not provided. Freestanding cots do not fit in the bedrooms of any other caravans or any of the chalets. We do not supply bed rails. Beds cannot be removed from any units to accommodate cots.

Pets

We're sorry but pets are not allowed on site with the exception of Registered Guide or Assistance dogs.

Single Sex Groups

St Ives Bay Holiday Park provides a relaxed environment tailored to the needs of families and couples. As such we do not offer bookings to single sex or other similar groups.



Important Dates to Remember...

OFFICE	Open	April & Oct- Open Mon - Sat. May to Sept - Open Daily. Staff available outside of office hours via intercom at reception.
THE PARK	Open:	Friday 6th April - Saturday 3rd November (Limited facilities for early and late season)
PARK SHOP	Open daily:	Saturday 5th May - Friday 28th September
THE SANDS BAR	Open evenings:	Saturday 5th May - Friday 28th September
	Lunchtimes & evenings:	Saturday 2nd June - Friday 31st August (21st July - 27th Aug evening opening from 5pm)
DYNAMITE BAR	Open evenings:	Saturday 2nd June - Friday 7th September (Separate entertainment for adults & children every night)
SWIMMING POOL	Open daily:	Saturday 7th April - Friday 4th May, 9am - 1pm (except Saturday) Saturday 5th May - Friday 28th September, 9am - 6pm Sunday 30th September - Friday 2nd November, 9am - 1pm (except Saturday)
BAY BISTRO	Open daily:	Friday 6th April - Friday 28th September (Limited opening times early & late season)
LAUNDERETTE	Open daily:	Friday 6th April - Friday 7th September

Booking Conditions

1. **Booking Contract.** St Ives Bay Holiday Park is owned by Porthvan Enterprises Limited. The renting of a Chalet, Holiday House, Caravan or Touring Pitch (the Accommodation) will form a binding contract between the person (the Client) making the booking and staying in the party (who must be 21 years old or more) and Porthvan Enterprises Limited (the Company). The contract is made between the Client and the Company on the basis of the information in the brochure including the booking conditions. The Client may not sublet the accommodation or assign the booking to another party. The Client accepts responsibility of the actions of all persons who will occupy the accommodation and who must all be named on the booking. A contract is agreed when a deposit is paid and the Company has provided written confirmation it is the responsibility of the Client to check that the written confirmation is correct.

2. **Balance of Monies.** The Client will notify the Company of any delay in forwarding the balance of monies by the due date (56 days, ie 8 weeks) prior to the holiday. If the Company is not notified it will assume that the holiday is cancelled. The Company will retain any monies paid and re-let the accommodation. The company reserves the right to pass on charges incurred in processing card payments.

3. **Cancellations.** Cancellation of bookings should be advised to the Company's office immediately and then confirmed in writing. The Company will transfer monies already paid (including deposits) to another holiday in the same or following season. Your attention is drawn to the cancellation cover scheme offered. Please note the specific areas covered. No monies except those covered under the cancellation cover schemes are refunded. All amendments to bookings must be put in writing and an admin charge of £10 will be made on 2 or more amendments. No refunds will be given to anyone wishing to depart early.

4. **Claiming your accommodation.** The Company must be paid in full before the accommodation is made available to the Client. Accommodation should be claimed within 24 hours of the arrival time. There are no refunds on unclaimed accommodation. Please advise the office of delayed arrival. Where payment has not been made in full the management will re-let the accommodation at midday on the day following the due arrival day.

5. **Non availability.** Where accommodation booked by the Client becomes unavailable due to circumstances beyond the Company's control, the Company reserves the right to supply accommodation of a similar, or better grade to that booked, or to refund monies paid to the Company in full. Under these circumstances special requests for units may not be fulfilled.

6. **Family Holiday Park - unsuitable persons and unreasonable behaviour.** The Company reserves the right to refuse a booking, to refuse entry, or to eject from the Park and its accommodation any person (or persons) who in the opinion of the Management of the Company is (are) unsuitable to take charge of the accommodation or who during their stay cause a danger, nuisance or disturbance to other persons on the Park. In such cases monies shall NOT be refunded to the Client. The contract shall be deemed discharged when the Client has left the Park. The Company does not accept bookings from all male or all female groups, or similar groups.

7. **Circumstances beyond the control of the Company (Force Majeure).** The Company is relieved of legal and financial liability where damages arise which are due to circumstances beyond its control. These shall include but not be limited to riots, civil disturbance, terrorist activity, industrial dispute, epidemic, storm, fire, water or power cuts.

8. **The Company's Liability.** Except where a statutory liability arises in circumstances of death and personal injury the Company's liability to the Client

shall be limited to the price paid for the holiday as detailed in the brochure. It is an express condition of this booking that the Company is relieved of liability for any other accident or loss or damage which may be sustained by Clients or their property. Clients should make their own arrangements for the insurance of personal property.

9. **Weapons, Firearms, Air guns, Knives, BB guns, Laser Pens or similar weapons** are not allowed on the Company's Property. If found The Management will remove them to safe custody.

10. **Breakages.** All breakages or damage must be reported to the office. The Company reserves the right to charge for damage caused although it will not normally do so where damage is accidental. The park reserves the right to charge the Clients credit/debit card or send an invoice for the relevant amount. We may also charge for cleaning of carpets/upholstery & curtains as a result of smoking in the unit or for other reasons.

11. **PETS. THE PARK DOES NOT ACCOMMODATE PETS EXCEPT GUIDE DOGS BY ARRANGEMENT.**

12. **VAT.** All charges quoted are inclusive of VAT at the current rate but the Company reserves the right to amend this or any other tax element in the event of a rate of tax change.

13. **Amenities and entertainment.** The Company will make every effort to provide facilities amenities and entertainment as specified in the brochure. However if due to sickness, lack of support from performers, breakdown of equipment or other similar circumstances which are out of control of the Company it may at times be necessary to withdraw a service or close an amenity or facility without notice. The Company reserves the right to withdraw or alter a service facility or amenity and to change the entertainment programme without notice or refund monies to the Client.

14. **Responsibility for children and under 18's.** Clients who bring children or young people on holiday are responsible for them at all times. They must ensure that under 18's do not consume alcohol on the Park. They are responsible for ensuring that all under 18's return to their unit by midnight. Noise which disturbs others after midnight is not acceptable. Clients who do not respect this condition and who disturb others, or who have children or young people in their party who disturb or cause a nuisance to others or the staff on the Park, **WILL BE OBLIGED TO LEAVE THE PARK. THERE WILL BE NO REFUNDS IN THIS CASE.** Some activities and entertainment including playground equipment are provided for children. There are no childminding facilities provided by the Company. Children are the responsibility of parents and/or guardians at all times and must be supervised when enjoying the activities and entertainment and on the play equipment provided by the Company. Children under the age of 12 are not allowed in the Pool building without supervision. The Pool staff have the absolute authority to eject any person from the pool area.

15. **Arrangements and facilities for less able guests** are limited (but improving) at St Ives Bay Holiday Park. In particular we draw your attention to doorways which are too narrow for wheelchair users. Please ring and discuss your requirements with our staff, and confirm them in writing at the time of booking. Special arrangements cannot be guaranteed unless confirmed in writing.

16. **Times of Occupation and Vacation of Accommodation.** The Company will endeavour to have accommodation ready for the Client by 4pm on the arrival date. In very busy weeks or in circumstances beyond the control of the Company, accommodation may be available later than this but will normally be available by 6pm. Accommodation should be vacated by 9am on the departure date. If accommodation is not vacated by 10am then the Company (by Management decision) may remove all personal possessions from the accommodation and

will make reasonable efforts to safeguard the property for the collection by the Client as soon as is reasonably possible. A late departure charge of £25 per hour will be made for anyone still in their accommodation after 10am.

17. **Comments and Complaints.** If you have a comment or complaint about St Ives Bay Holiday Park then please bring it to the attention of our staff immediately. They will normally be able to help you. Otherwise please forward your comments within 14 days of your departure. In the event of a complaint it is unlikely that the Company will be able to help you at a later date when the problem could have been solved on the spot. We ask that you read our brochure carefully. Although it is supposed to give a general impression, it does contain much specific written and pictorial information on which you base your holiday choice and sign a binding agreement with us.

CANCELLATION COVER (Recommended)

BENEFITS

- i) Refund of any deposit monies in full
- ii) Refund of any balance of accommodation charges or other monies
- iii) Relief from any further liability under your contract with the Company for accommodation booked and balance of charges due.

PERIOD OF COVER

The cover operates from the day the reservation deposit payment is received in our office up to but not including the day of arrival.

PERSONS COVERED

Only those persons named on the reservation form for that individual booking.

ITEMS COVERED

Illness, quarantine, jury service, death, disablement by bodily injury, medical advice following pregnancy, redundancy. For any person named on the booking.

ITEMS EXCLUDED

Insanity, suicide, being under the influence of drugs or alcohol, any defect or infirmity or illness which existed at the time the cover becomes operative.

CLAIMS

Claims must be notified without undue delay and confirmed in writing before the time of arrival, and must be substantiated by a Doctor's certificate where applicable, or by authoritative proof.

RECEIPTS/ACCEPTANCE PAYMENT

The receipt of payment will be acknowledged on the reservation invoice and such acknowledgement confirms the Company's acceptance of the risk. The payment must be received at the time of booking and cannot be added at a later date or refunded once paid.

COST

£12 per week per chalet, holiday house, caravan or touring pitch paid with deposit. This does not cover your personal possessions. Your own personal insurance or household insurance may cover personal accident, loss of money, luggage etc. Please check this prior to your holiday.

Our Prices for 2012- Prices include VAT, electricity, gas and TV.

Holiday Dates	Houses 4 Bed Up to 10	A6 3 Bed Up to 6	A5* 2 Bed Up to 5	A5 2 Bed Up to 5	A4* 2 Bed Up to 4	A4 2 Bed Up to 4	A2 1 Bed Up to 2	C4 2 Bed Up to 4	Osprey 36x13ft SV ★★★★ Up to 8	Horizon 36x12ft SV ★★★★ Up to 8	Raven 33x12ft SV ★★★★ Up to 6	Sirocco 28x12ft SV ★★★★ Up to 6	Mirage 28x10ft SV ★★★★ Up to 6	Neptune 28x10ft ★★★★ Up to 6	Merlin 28x10ft ★★★★ Up to 6	Mermaid 26x10ft ★★★ Up to 4	Static Tents	Pitch Charges Per Night*
Four person Supplement										70		80						
Two person Supplement				20		20				60		70	70	20	10			
Easter 8 days, 6 April	754	419	335	314	320	304	209	-	499	357	414	328	288	Pool open A.M. Only (except Saturdays). Bars & shop closed. Check dates pg 12.			-	10
Easter 5 days, 6 April	-	314	251	236	240	228	167	-	374	268	254	246	216				-	-
14 Apr - 5 May, 7 days	514	230	209	203	207	193	156	-	296	213	254	211	205				-	10
14 Apr - 5 May, 5 days	-	177	166	146	149	146	136	-	204	177	183	162	162				-	-
5 May	713	249	241	230	246	230	157	162	355	330	333	310	298	183	172	142	-	10
12 May	679	291	253	243	258	243	164	189	399	339	359	317	308	183	172	148	-	10
19 May	792	291	253	243	258	243	164	189	399	339	359	317	308	183	172	148	-	10
26 May	1026	291	253	243	258	243	164	189	399	339	359	317	308	183	172	148	148	10
2 June	1186	449	425	399	399	377	240	286	649	569	586	523	473	335	329	269	245	19
9 June	1079	336	328	294	299	279	226	227	543	462	399	379	363	254	244	235	178	13
16 June	1079	371	365	337	343	314	238	252	593	506	449	423	383	283	272	259	189	13
23 June	1188	436	413	359	366	324	261	274	660	550	499	444	403	315	305	269	198	13
30 June	1296	449	444	387	395	367	271	300	740	599	549	509	463	333	322	279	234	13
7 July	1512	509	469	413	421	387	282	305	826	649	619	561	510	356	346	289	259	13
14 July	1512	549	499	469	499	449	299	349	849	699	649	599	549	472	462	299	306	17
21 July	1512	708	659	579	599	549	349	468	899	771	799	756	599	567	557	458	458	17
28 July	1512	708	672	650	663	617	374	468	997	771	877	756	649	567	557	458	458	25
4 August	1512	708	672	650	663	617	374	468	997	771	877	756	649	567	557	458	458	32
11 August	1512	708	672	650	663	617	374	468	997	771	877	756	649	567	557	458	458	32
18 August	1512	708	672	599	619	569	374	429	997	771	848	699	649	567	557	458	458	29
25 August	1188	550	539	479	505	469	339	351	699	529	619	539	499	438	418	343	280	19
1 September	971	354	337	327	332	262	209	183	557	393	468	379	339	284	273	193	201	10
8 September	647	309	239	239	246	224	196	172	383	323	340	296	263	183	172	152	-	10
15 September	647	241	219	209	213	199	166	162	258	233	241	224	215	183	172	152	-	10
22 September	647	241	219	209	213	199	166	-	258	233	241	224	215	183	172	152	-	10
29 Sep - 20 Oct, 7 Days	514	230	209	203	207	193	156	-	296	213	254	211	205	Pool open A.M. Only (except Saturdays). Bars & shop closed. Check dates pg 12.			-	-
29 Sep - 20 Oct, 5 Days	-	177	166	146	149	146	136	-	204	177	183	162	162				-	-
27 Oct - 3 Nov, 7 days	719	241	219	219	213	199	166	-	316	233	270	224	215				-	-
27 Oct - 3 Nov, 5 Days	-	187	176	156	159	156	146	-	229	187	196	162	162				-	-

Extras: Decking £60 per week. Cots £10.00 per week. High Chairs £10.00 per week. Deposits per week £70.00 and Houses £200.

Wed to Wed Units described on pg 5 & 7.	Chalets B4/5 up to 4 or 5 2 Bedroom	Sundew 26ft x 10ft ★★★★ Up to 6
9 May	194	194
16 May	194	194
23 May	199	221
30 May	287	287
6 June	217	219
13 June	243	249
20 June	264	269
27 June	304	309
4 July	325	329
11 July	366	369
18 July	399	399
25 July	522	533
1 August	522	533
8 August	522	533
15 August	522	533
22 August	365	369
29 August	261	267
5 September	192	192

* Pitches: prices shown include the use of all park facilities such as the pool and clubs. Showers and hot water are free. Extras listed below.

Pitch: Extras (per night)

Hookup, 16 amp	4.00
Fully Serviced Pitch with Hookup, Water & Drainage	5.50
Extra Car	2.00
Extra Person, 10 years old or over	8.00
Under 10	FREE
Showers	FREE
Hot Water	FREE



TWO PERSON/FAMILY OFFERS (see page 3) In the orange boxes offer prices apply. For chalets take the A2 price and add the supplement shown at top of the chart. For caravans take Mermaid price and do the same. If no supplement is shown, there is no offer.



If undelivered please return to:
St Ives Bay Holiday Park, Upton Towans, Hayle, Cornwall TR27 5BH



How to book...

Click: www.stivesbay.co.uk

Call: 0800 317713

By Post: Complete our booking form on page 15 and post to:

St Ives Bay Holiday Park,
Upton Towans,
Hayle, Cornwall
TR27 5BH

St Ives Bay is brilliantly situated for access to the rest of Cornwall. We are about 1/2 mile from the A30, which makes your journey to us easier, and gives great road access to the many sights and attractions that Cornwall has to offer you.

